

Citizen Security Handbook



**Ministry of
National
Security**

**Advancing Citizen
Security**

**Building Resilience
Foundations for Sustainable
Development**

2 Oxford Road
www.mns.gov.jm



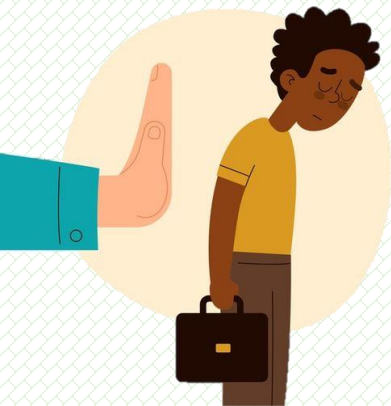
CONTENTS



| | |
|---|----|
| Introduction..... | 1 |
| Social Investment Approach..... | 2 |
| What is Social Investment? | 3 |
| How is the Approach Different from other Social Interventions? | 4 |
| Targeted Groups | 5 |
| Targeted Communities | 6 |
| Integrated Service Delivery | 7 |
| Core Implementation Entities | 8 |
| Priority Initiatives | 10 |
| • 25 School Strategy | 11 |
| • Training of At-Risk Youth | 12 |
| • Articulated Truck Driving Simulator | 13 |
| • JSIF Safe Spaces | 14 |
| • Parenting Education | 15 |
| • Community Policing Initiatives | 16 |
| • Integrated Service Delivery | 18 |
| • Rehabilitation..... | 19 |
| • Benefits of New Approach | 25 |

Introduction

Multi-Causal Socio-economic issues which contribute to Crime & Violence



Crime and violence have had demonstrably dire consequences for the quality of lives and livelihoods in the Jamaican nation-state. The Government of Jamaica has been committed to improving Citizen Security at the micro, meso and macro levels.

Citizen Security is however a **cross cutting issue** which is not the sole responsibility of the security forces since there are multi-causal factors across sectors that contribute to the degradation of public order and safety. These include poverty, limited opportunities for employment, child-bearing at a very young age, poor or absence of parenting, family disruption and low educational achievement.



Consequently, **a renewed approach** is required which addresses the **root causes** of these issues, and one which compels a commitment of mobilized resources allocated by a wide range of government agencies, civil society, development agencies, private sector and community partnerships in responding to these challenges.



The Social Investment Approach



The Citizen Security Plan (CSP), approved in May 2020 recognizes the value of a multi-sectoral approach to **improving safety** and **security**. This approach invariably focuses on community development, through the delivery of targeted **Social Transformation Programmes**.

Both the ZOSO legislation and the CSP are intended to shift from a traditional method of implementing social interventions to a new and transformative means to crime prevention through social investment.

A combination of prescribed social interventions will be delivered in tandem with the delivery of community policing and enhanced community governance. These are two significant contributing elements required for sustainability at the community level.

What is Social Investment?



This synergistic, whole-of-society approach within communities will adequately address the concept of the **BUILD** phase of the CLEAR-HOLD-BULD strategy.

The Social Investment Framework provides for a tangible way of defining build for the various stakeholders, to allow for a comprehensive work plan.

The Social Investment Framework represents the government's financial investment or allocation to social and infrastructural related initiatives or projects, throughout the Ministries, Departments and Agencies (MDAs) in order to ensure human capital development and contribute to providing for community resilience and sustainability.



How is this Different from other Social Intervention Approaches?



The aim is to provide for renewal in these communities that have been plagued for years by violence, thus affecting good citizens.

The intent is not to just provide for handouts, but rather provide for **sustainable renewal and growth** at the socio-economic level. Social Investment is about reducing social inequality and thus providing for an eco system to realize Vision 2030.

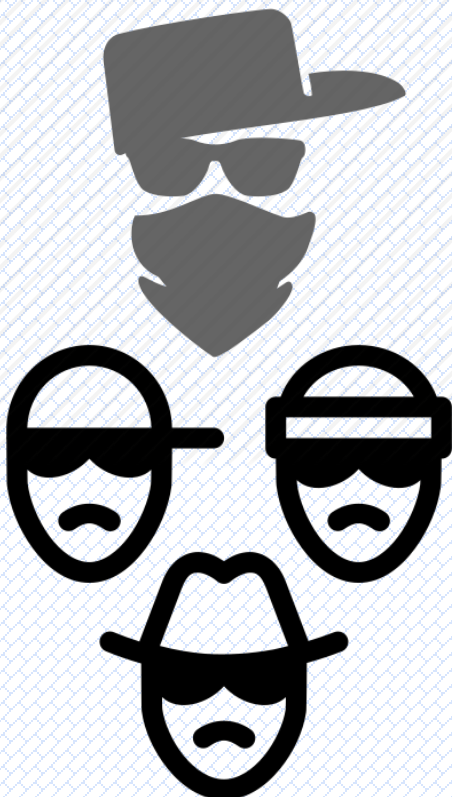


It is an **evidence-based approach** developed through co-creation, utilizing lessons learnt and best practices.

Targeted Groups

➤ **At-Risk-Youths** between the ages 8 to 25 that identify with certain risk factors, namely:

- ✚ Parental Risk – limited/no parental guidance
- ✚ Dysfunctional home (Abuse – domestic and otherwise)
- ✚ Exhibit poor nutrition
- ✚ Truancy (intermittent attendance at school)
- ✚ School Dropout/Unattached (lack of attachment to any formal educational, training or employment opportunity)
- ✚ Substance Misuse
- ✚ Gang Recruited



➤ **Violence Perpetrators**

✚ **Typical Profile:** Male; Aged 14 to 24 years; Resides in a volatile community, high levels of exposure to violence based trauma; Limited/No Parenting Support and Adult Supervision; Exhibits a belief driven by a short life Expectancy (Living for the Now)

➤ **Parent/Household of At-Risk-Youth**

Targeted Communities



ZOSO Communities

- ✚ Mount Salem
- ✚ Denham Town
- ✚ Greenwich Town
- ✚ August Town
- ✚ Norwood
- ✚ Parade Gardens

Southern Crescent

- ✚ Downtown Area
- ✚ Harbour View Area
- ✚ Duhaney Park Area
- ✚ Three Miles Area
- ✚ Half Way Tree Area

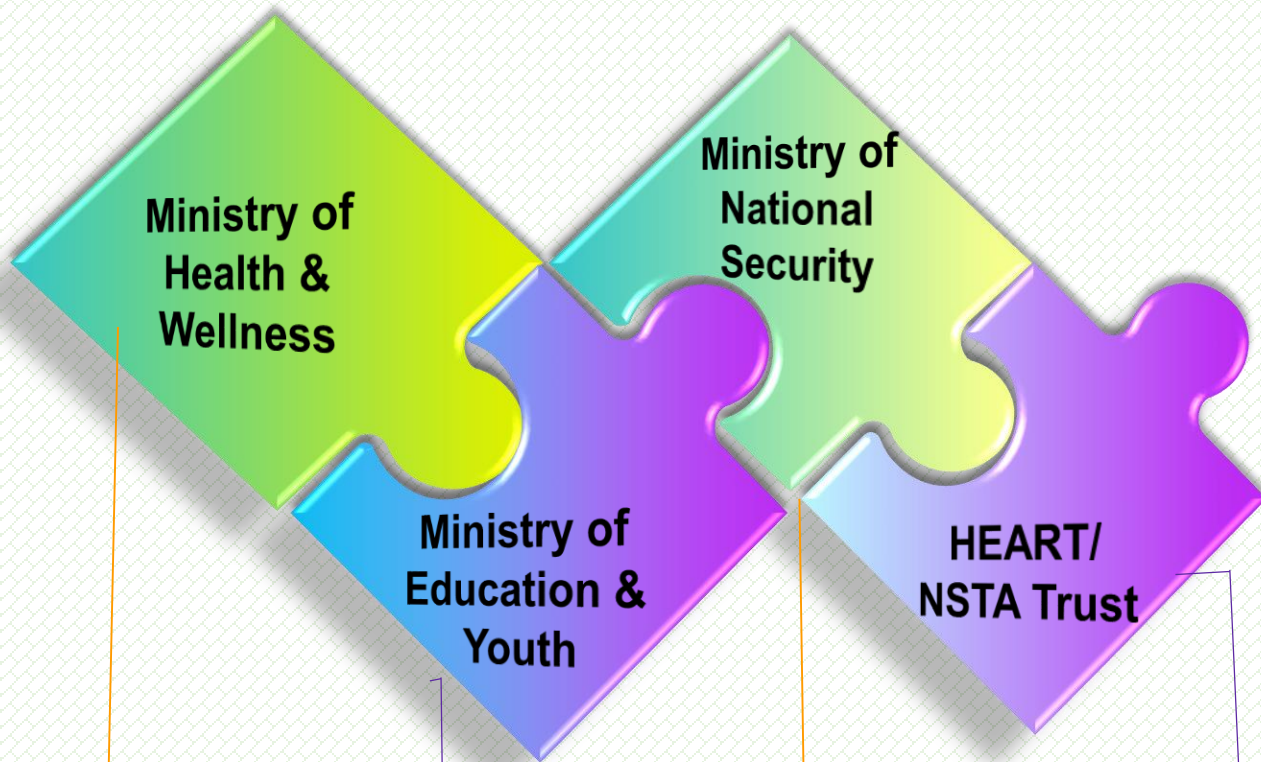
Integrated Service Delivery



Community safety is **a shared issue and therefore requires a partnership approach**, involving all of government, civil society, non-government organizations and the community. Pillars of the Social Investment Framework include:

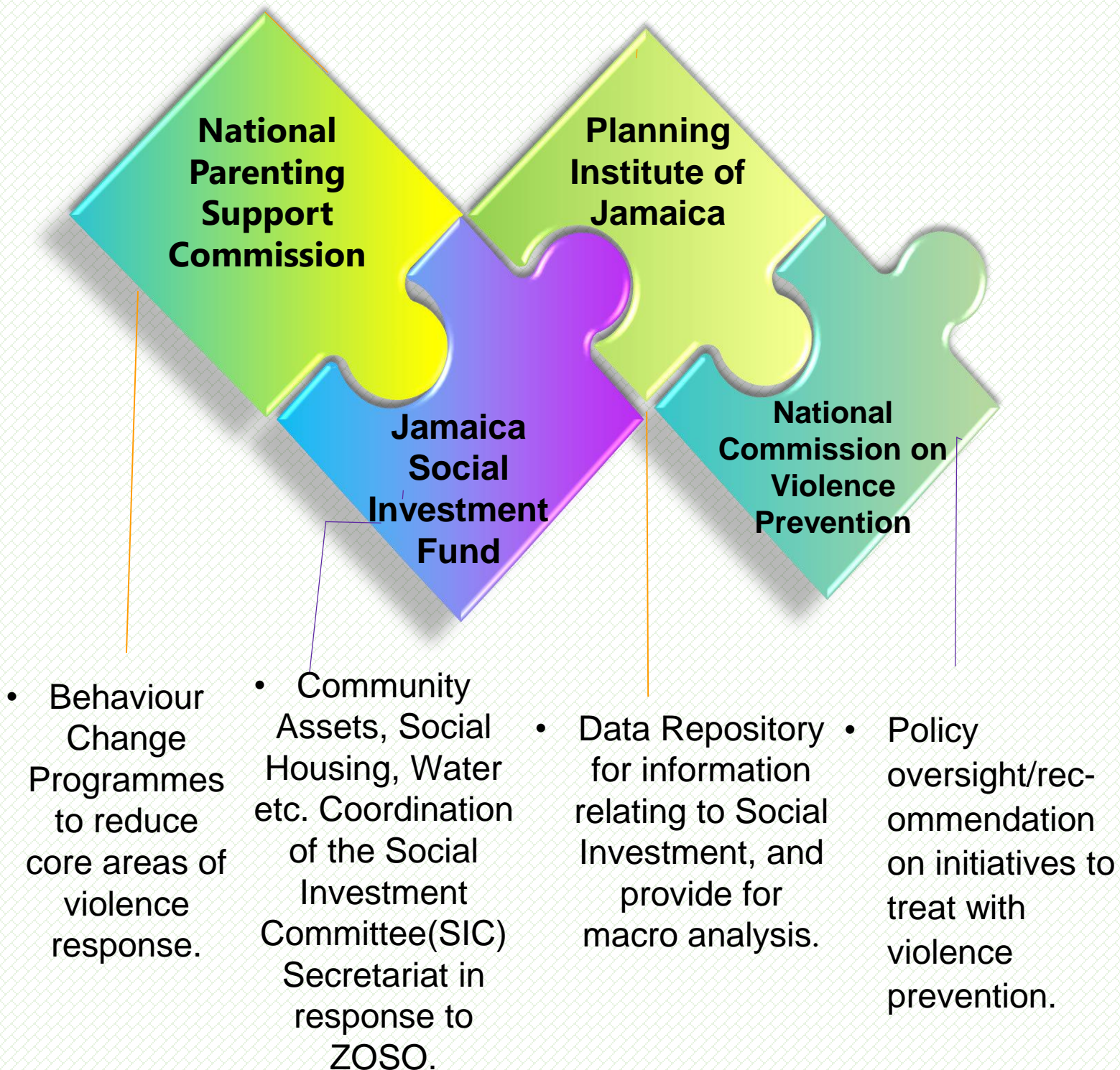
- ✚ Political Governance
- ✚ Local Governance
- ✚ Integrated Delivery of Social Investment Services
- ✚ Social Transformation
- ✚ Physical Transformation
- ✚ Safety & Justice

Core Entities

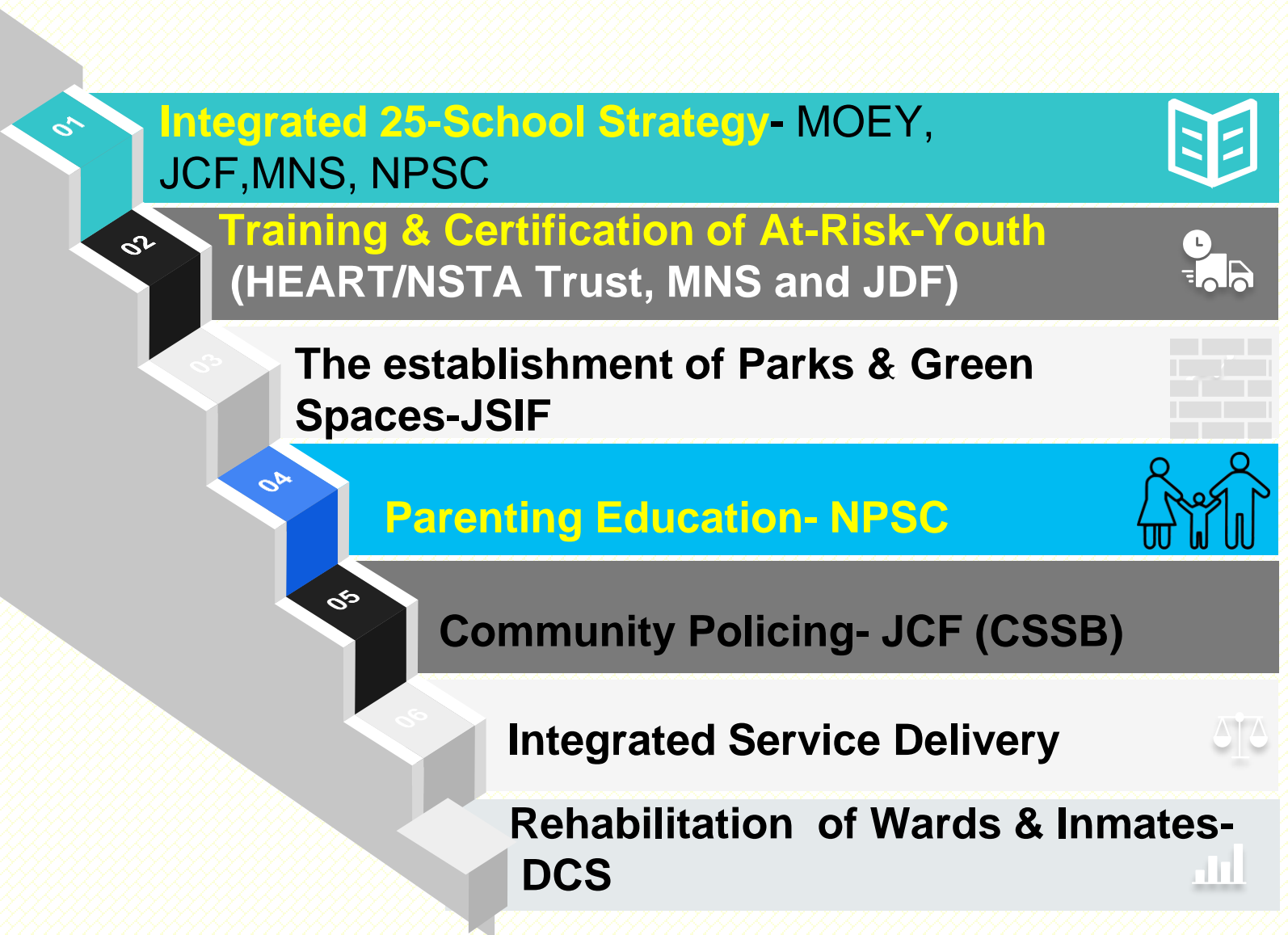


- Pre-natal care, Vaccination, Nutrition,
- Psychosocial services (child guidance clinics, counselling etc.)
- Traditional & Vocational Pathways – with focus on truancy, dropouts and untrained.
- Case management for most at risk (tertiary level),
 - Community engagement programmes along with other MDAs.
- Monitoring through CSS of effectiveness of interventions.
- Training, Providing for natural linkages with MOEY to treat with the dropouts and untrained/unattached; Skill Training, Upskilling and Certification.

Core Entities



Priority Initiatives



Priority Initiatives

Integrated 25-School Strategy



Literacy Interventions

Teachers from six (6) of the 25 schools were trained in Creative Language Based Learning. Five (5) schools began the literacy interventions.



Behaviour Modification

Two (2) schools, namely Haile Selassie High School and Whitfield Primary School have received the School Wide Positive Behavior Intervention training.



Case Management

Twelve (12) of the 25 schools have submitted their recommendations of students for case management. 800 students were targeted, 357 students have been recommended.

Case officers are being deployed to risk assess students recommended by schools and upon meeting eligibility criteria, will be case managed.

Database Systems

A demographic database and an attendance database system is being created as an integrated records management system.

Priority Initiatives

Training & Certification of At-Risk-Youth HEART/NSTA Trust



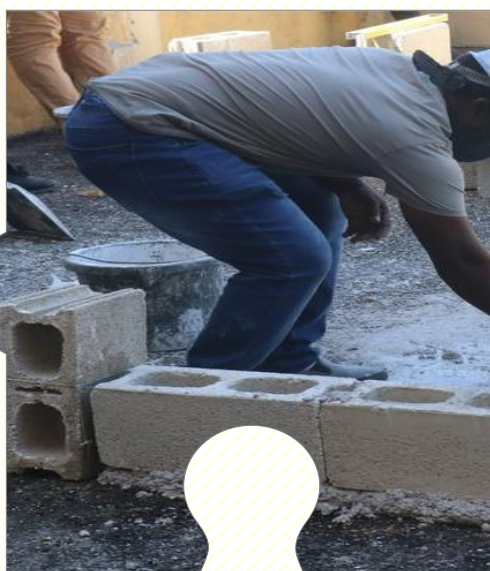
A total of **2,228** youth from the ZOSO areas & the CSP communities were certified and **6,272** were enrolled.



A total of **36,428** youth have been enrolled in training, and **14,011** have been certified islandwide.



40% males and 60% females were trained and certified.



Priority Initiatives

Articulated Truck Driving Simulator- MNS, JDF, HEART/NSTA Trust



The Truck Driving programme uses state-of-the-art technology in the form of simulators.

Training commenced in November 2020. The programme was undertaken in both Montego Bay & Kingston.

Total Enrolled: **56 (26 – Cornwall, 30 Kingston)**

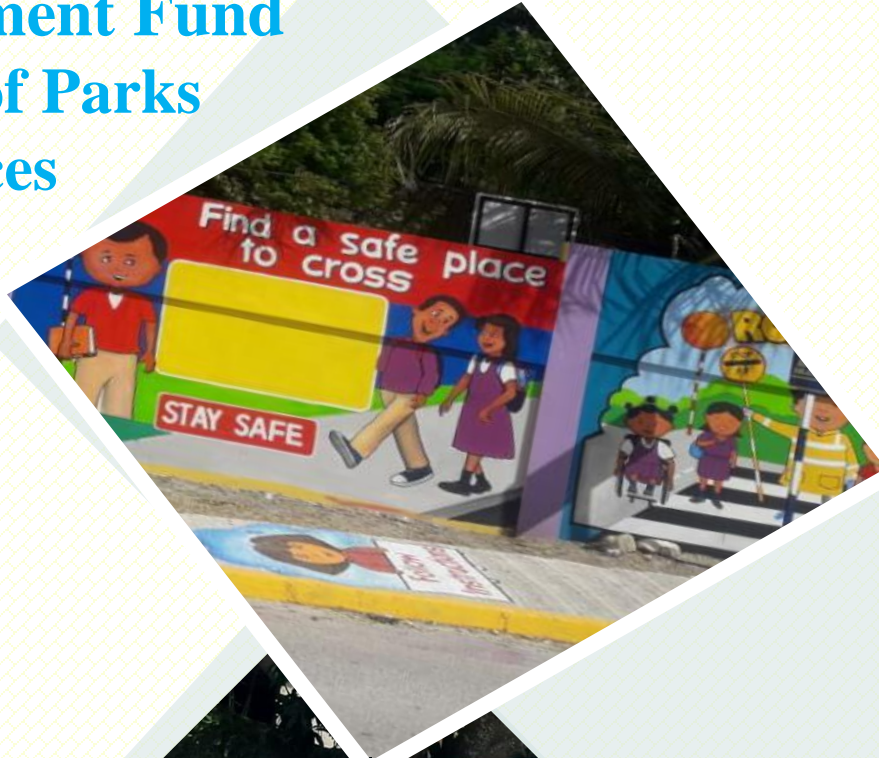
Currently approximately **120 young persons** (60 from the KMA and 60 from St James) are being trained in Articulated Truck Driving.

Priority Initiatives

Jamaica Social Investment Fund The establishment of Parks & Green Spaces

19 Green Spaces
created for the
2021/2022 FY in
Denham, Greenwich,
August Town,
Treadlight, Mount
Salem, Salt Spring
and Anchovy.

- 3 Safe Passages**
- 14 Parks & Green Spaces**
- 1 Road/Sidewalk Rehabilitation**
- 1 Zinc Fence Removal & Substitution**



Priority Initiatives

Parenting Education- National Parenting Support Commission (NPSC)



Parenting Education will seek to improve parenting practices (providing for a focus on positive parenting) among selected parents across the country.



This parenting programme commenced in 2021 and due to the COVID-19 constraints, the National Parenting Support Commission (NPSC) had to use a mixed-modality approach to implement the parenting education programme while ensuring that the service delivery model was not compromised.



To date, over **90,000** parents have been engaged and provided with various levels of training.

Priority Initiatives

Community Policing Initiatives



The JCF in partnership with the United Nations Development Programme in 2021 established six (6) additional **Domestic Violence Intervention Centers** that brings the total to **ten (10)** such established centers. This has resulted in increased engagements of police and citizenry in anti-domestic violence activities island wide.


Increased engagements have been conducted using the **Police on Parade Uplifting People (POPUP)** programme that allows the police to enter public spaces and engage with citizens within that space.

Priority Initiatives


Community Policing Initiatives




Community and Widely Publicized Meetings arranged by the police and other stakeholders in communities to address the issues of Domestic Violence. Each police station is expected to host one such meeting monthly. Since the start of the year sixty-six (66) meetings were held.



Sensitization of Neighbourhood Watch groups, Justices of the Peace, church groups, guidance counsellors and other community-based organizations as 1st responders to domestic violence intervention and prevention in communities and schools. In 2021, **five hundred and forty-four (544) civilians were trained**.



Since the start of the year **one hundred and eight (108) police officers** have been trained in domestic violence in collaboration with the United Nations Population fund (UNDP).



The Proactive Violence Interruption Strategy (PVIS) is a social intervention/crime reduction tool that was developed to combat incidents with the potential for a reprisal. In 2021, **87 police officers** and external stakeholders were introduced to the programme.

Priority Initiatives

Integrated Service Delivery



The Safe Schools Programme is a special programme developed in collaboration with the MOEY and the MNS through the JCF to assist schools in managing violence, antisocial behaviour, truancy, children at risk and generally to keep the school environment safe. There are one hundred and fifty-four (154) schools on the programme.



Since the start of this year a total of sixty-nine (69) **School Resource Officers (SROs)** were trained/retrained.



In partnership with the MOEY, the MNS is implementing a number of **social services fairs across the island**. The fairs are primarily hosted by schools serving vulnerable communities (including ZOSO communities). MNS and its MDA partners, will take the services to the residents of the communities. Four (4) fairs have been held to date.



Violence Prevention in targeted vulnerable communities and schools- The goal is to strengthen relationship between the police and citizens through effective application of community-based security measures in selected schools and their communities including support to Child Diversion and Restorative Justice priorities.

International Partnership- Citizen Security Plan with budget from the European Union, USAID Government-to-Government Agreement, UN agencies including but not limited to UNICEF, UNDP and other international development partners.

Priority Initiatives

Rehabilitation of Wards & Inmates

We Transform Youth Empowerment Programme



Eighteen (18) ex-wards were paired with mentors in one-on-one mentorship to help support their reintegration, under the Post Release component. Another 22 mentors referred to support the Lasco Chin Foundation's Entrepreneurship Programme.

Through partnership with Mr. Jeffrey Campbell (Agent Sasco) and Digicel, the Black Diamond Recording Studio was constructed and outfitted at the Metcalfe Street Juvenile Centre to facilitate exposure to and learning in the music industry for wards.

The Mentorship Programme was implemented within all four (4) juvenile centres using the online platform (some individual sessions are conducted face-to-face). Approximately 50 mentors and 100 mentees were engaged.

The We Transform Mentorship Programme now has two hundred and thirty-eight (238) mentors in its database.

Priority Initiatives

Rehabilitation of Wards & Inmates

We Transform Youth Empowerment Programme



The School Based component of the Mentorship Programme was implemented in May 2021 in which twenty (20) youth from across 10 of the Ministry's priority schools were paired in one-on-one mentorship.

Seventeen (17) clients of the DCS (former wards and probationers) referred for vocational training with the HEART NSTA Trust and 5 placed within its HOPE Summer Youth Work Programme.

This was facilitated by an existing MOU among the MNS, DCS, HEART NSTA Trust and Housing Opportunities, Production and Employment (HOPE) programme.

Thirty-nine (39) youth were referred for engagement in the Lasco Chin Foundation's Earn-As-You-Learn Entrepreneurship Training Programme in collaboration with FHI360. 24 youth commenced the programme which offered training in entrepreneurship, exposed participants to Cognitive Behavioural Therapy intervention and provided a start-up kit of Lasco products valued at \$60,000 per participant toward starting their own business.

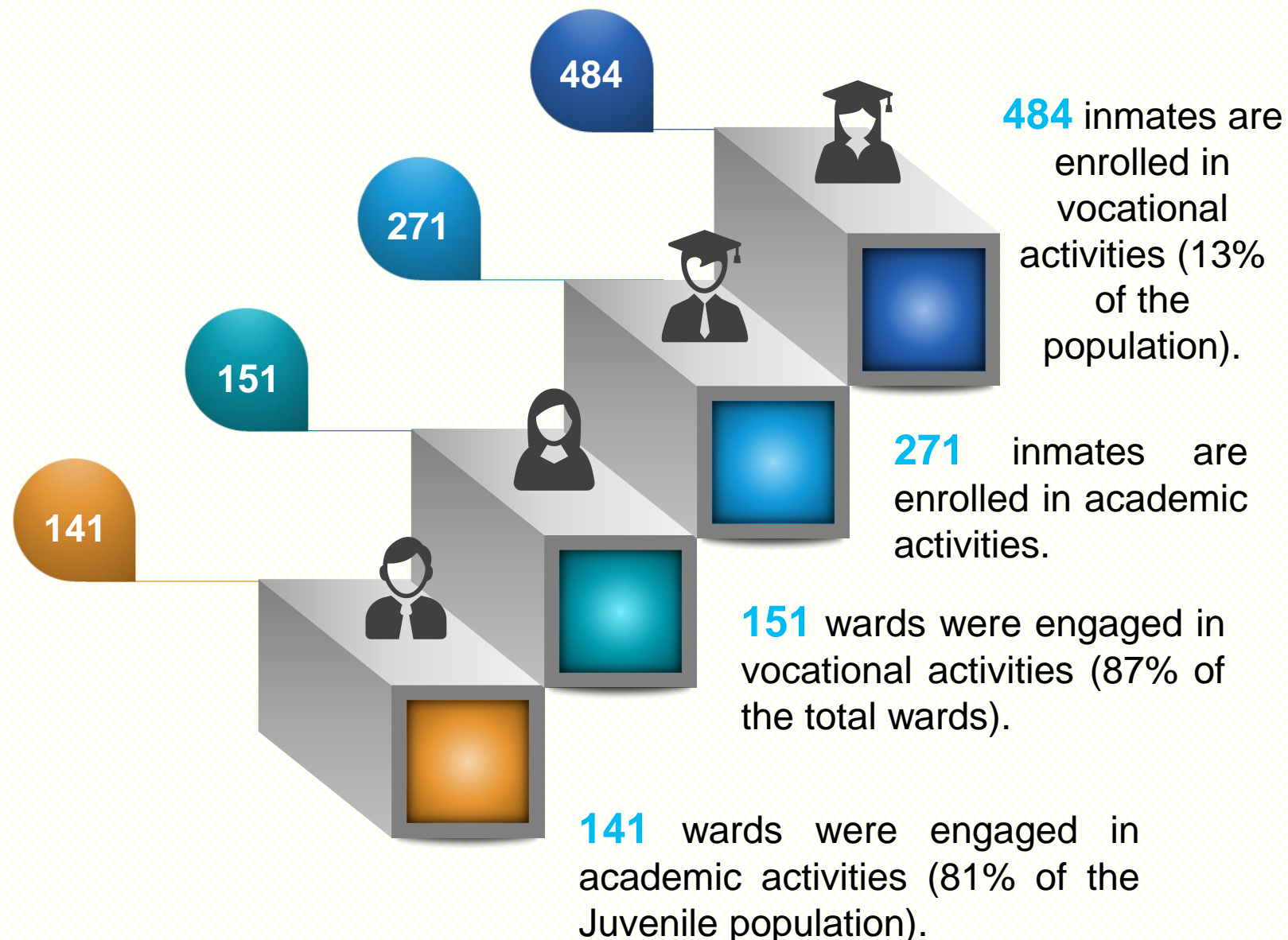
Priority Initiatives

Rehabilitation of Wards & Inmates

Academic Programmes

In 2021, the Department of Correctional Services saw major successes in its academic programme:

123 candidates were registered to sit the CSEC examinations, **45%** of all candidates who sat the exams passed at least one (1) subject (39/86) and **50%** of the registered wards were successful in at least one (1) subject (8/16).



Priority Initiatives

Rehabilitation of Wards & Inmates



Restorative Justice Partnership- Between November 2021 and April 2022, approximately **160** wards and inmates participated in the Restorative Justice victims (community) and nine offenders from three Adult Correctional Centers; St Catherine, Tower Street and South Camp Adult Correctional Centres.

The Prince's Trust Achieve Programme- This a life skills and employability programme that is accredited by the Prince's Trust International & Junior Achievement Jamaica. The programme is offered to persons between the ages of 11 to 19 years and aims to help young people improve personal development along with employability skills to properly prepare them for the world of work.

NVQ-J Certification Courses- **12** inmates received certification in basic carpentry. Since March 2022, a new cohort consisting of eight (8) inmates are currently engaged in carpentry and six in tiling.

Priority Initiatives

Rehabilitation of Wards & Inmates

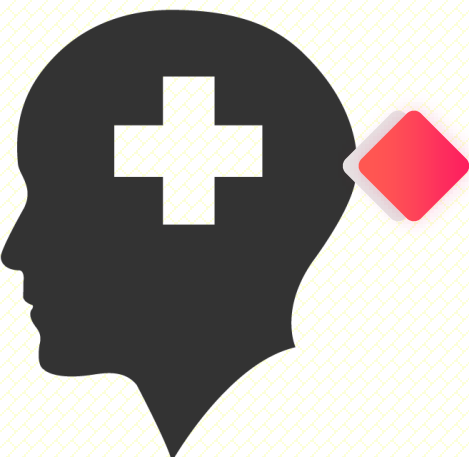


University of the Commonwealth Caribbean (UCC)- Six (6) scholarships have been awarded to pursue a bachelors degree at the UCC; four (4) inmates and two (2) correctional officers. The awardees are from South Camp and St. Catherine Adult Correctional Centres.



Psychosocial Interventions-

Between January- March 2022, 118 wards participated in the psychosocial intervention programme geared at addressing substance abuse, sexual reproduction and gender based violence within the juvenile institutions. The programme is facilitated by the MNS, MOHW and the Mico University.



Cognitive Behaviour Therapy- Partnership with FHI360 aimed at implementing Cognitive Behavioural Therapy (CBT) Programme. The programme will be piloted at South Camp Juvenile Correctional Centre.

Jamaica Theological Seminary- Partnership with the DCS to provide case management support within adult facilities. The Programme will involve masters students from the JTS who are pursuing Forensic Psychology.

Priority Initiatives

Rehabilitation of Wards & Inmates



The Tamarind Farm Infirmary opened in October 2021 to house elderly disabled inmates.



Expansion of Medical Staff- Six (6) additional full-time medical officers (Grade 2) were employed and added to the cadre of medical officers. A total of eight (8) medical officers are now employed from a previous total of just two (2) full-time before.

DCS recently received a centrifuge and other medical equipment from the Global Laboratory and Epidemiology Systems Strengthening Network (funded by PEPFAR and CDC) to enhance the department's HIV testing capabilities.

At least four (4) psychiatrists to be employed by August 2022.

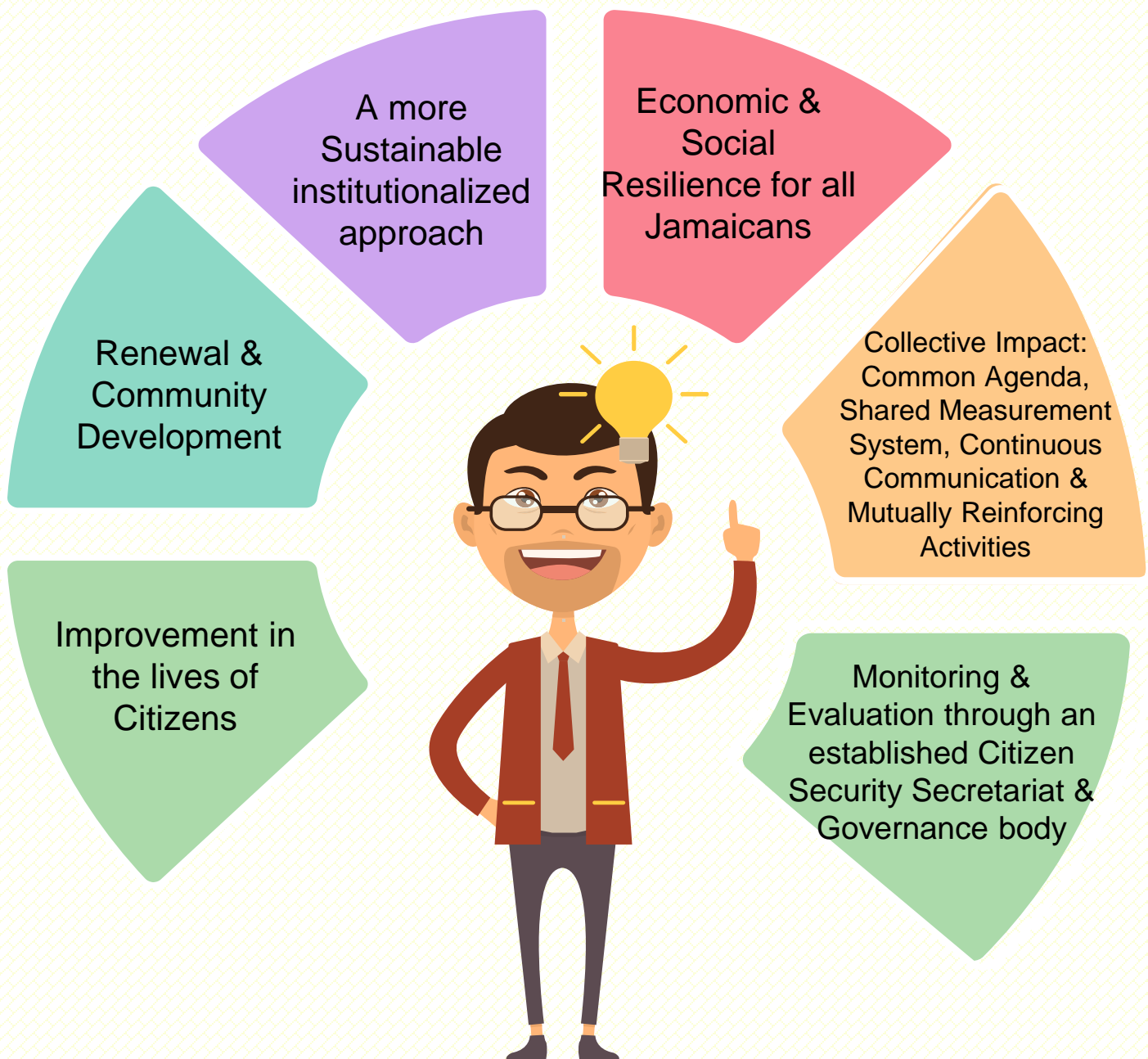


Covid-19 Vaccination- This effort resulted in seven hundred and fifty-one **(751)** doses administered to inmates/children and nine hundred and twenty **(920)** doses administered to staff members.



Chaplaincy- Two Thousand, Four Hundred and Sixteen **(2,416)** individual counselling sessions with inmates and wards were conducted.

Benefits of New Approach





**We all have to play our part in advancing
the welfare for all of Jamaica.**



**Play Your Part by Getting
Involved**

#Mentor-a-Youth

#Sponsor-a-Child

#Makingadifferencetogether



wetransformja@mns.gov.jm



Wetransform Jamaica



[wetransformjam](https://twitter.com/wetransformjam)



876-906-4908



[wetransformja](https://www.instagram.com/wetransformja)